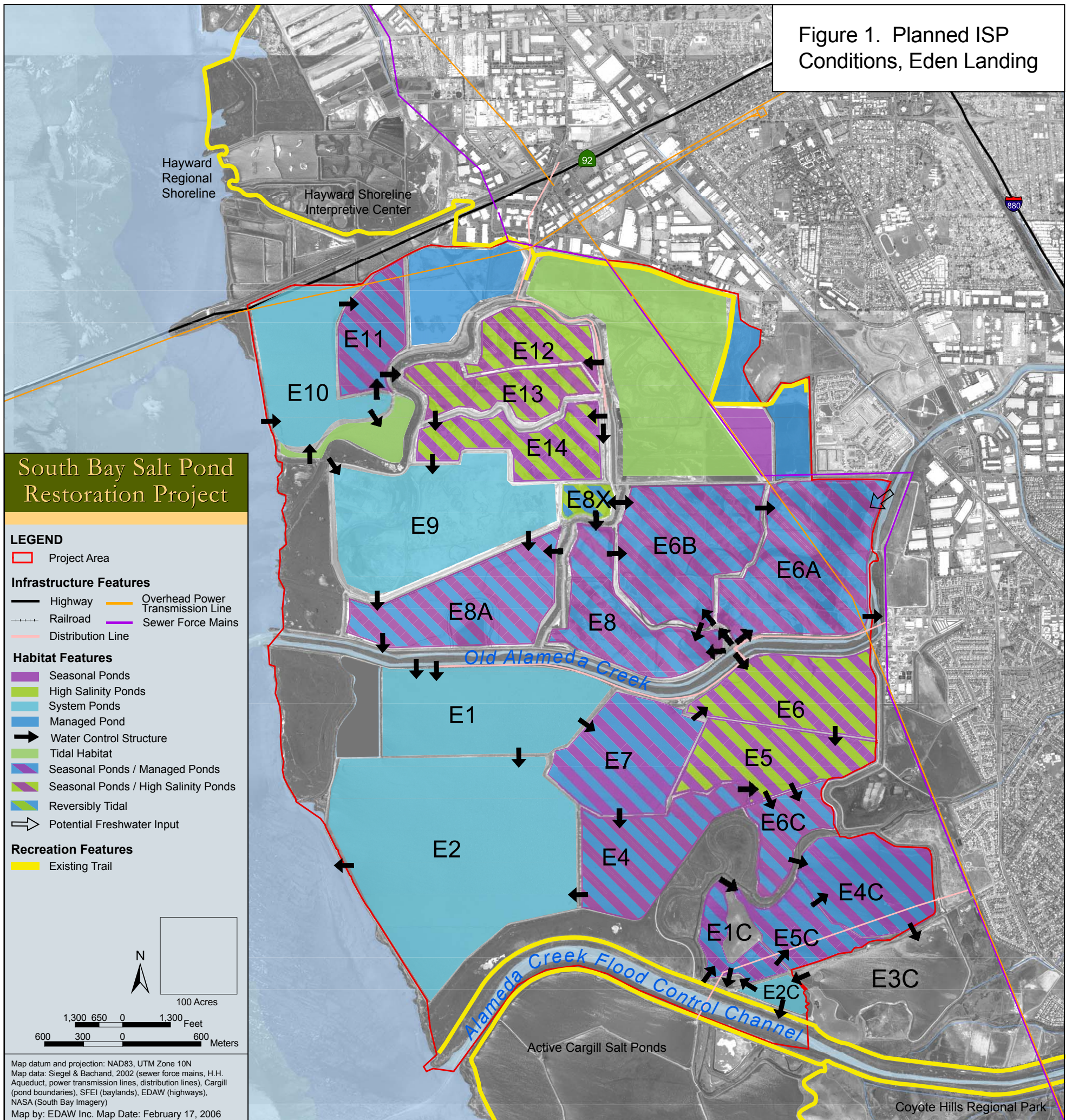


**PLANNED INITIAL STEWARDSHIP PLAN ACTIONS**

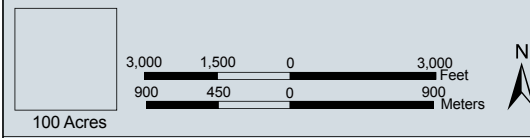
Figure 1. Planned ISP Conditions, Eden Landing



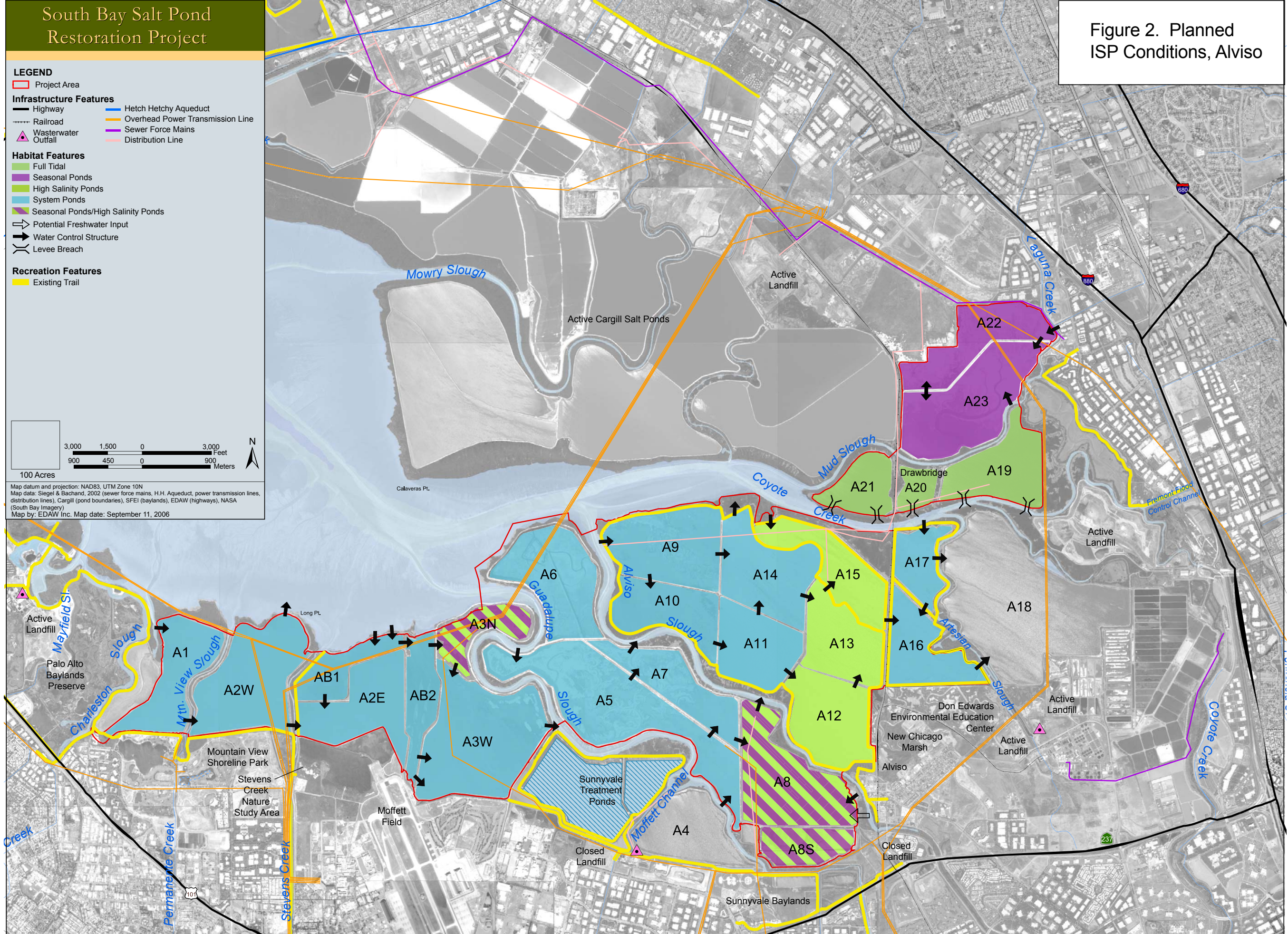
# South Bay Salt Pond Restoration Project

Figure 2. Planned ISP Conditions, Alviso

- LEGEND**
- Project Area
  - Infrastructure Features**
    - Highway
    - Railroad
    - Hetch Hetchy Aqueduct
    - Overhead Power Transmission Line
    - Sewer Force Mains
    - Distribution Line
  - ▲ Wastewater Outfall
  - Habitat Features**
    - Full Tidal
    - Seasonal Ponds
    - High Salinity Ponds
    - System Ponds
    - Seasonal Ponds/High Salinity Ponds
  - ⇨ Potential Freshwater Input
  - ⇩ Water Control Structure
  - ⌋ Levee Breach
  - Recreation Features**
    - Existing Trail



Map datum and projection: NAD83, UTM Zone 10N  
 Map data: Siegel & Bachand, 2002 (sewer force mains, H.H. Aqueduct, power transmission lines, distribution lines), Cargill (pond boundaries), SFEI (baylands), EDAW (highways), NASA (South Bay Imagery)  
 Map by: EDAW Inc. Map date: September 11, 2006

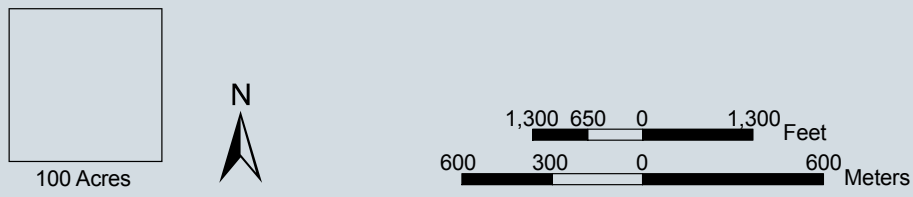


# South Bay Salt Pond Restoration Project

Figure 3. Planned ISP Conditions, Ravenswood

## LEGEND

- Project Area
- Infrastructure Features**
- Highway
- Railroad
- Overhead Power Transmission Line
- Sewer Force Mains
- Distribution Line
- Habitat Features**
- System Ponds
- Water Control Structure
- Recreation Features**
- Existing Trail



Map datum and projection: NAD83, UTM Zone 10N  
 Map data: Siegel & Bachand, 2002 (sewer force mains, H.H. Aqueduct, power transmission lines, distribution lines), Cargill (pond boundaries), SFEI (baylands), EDAW (highways), NASA (South Bay Imagery), Project Boundary taken from SFEI Interactive Map  
 Map by: EDAW Inc. Map date: February 17, 2006

